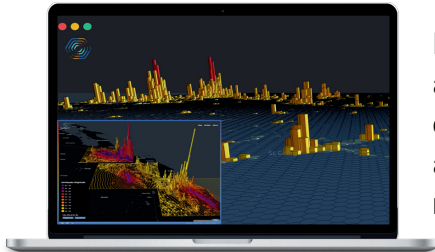


REVOLUTIONIZING DISASTER MANAGEMENT



Transforming Disaster Management with Real-Time Alerts and Intelligence.



IMPACT is a **Comprehensive Decision Support Tool** that provides real-time alerts and intelligence on emerging threats and their impacts on vulnerable communities and critical infrastructure. **Granular Insights** offer detailed analysis from local to regional scales to aid in effective disaster response and resource allocation.



Continuous Monitoring

Assesses risks from natural and man-made hazards in real-time.



Automated Alerting

Delivers instant notifications about threats to ensure timely responses.



Analytics & Reporting

Generates detailed reports and visualizations to identify high-risk areas.

Benefits of IMPACT



Real-Time Assessments

Track the number and characteristics of affected populations and critical community functionalities.



Resource Allocation

Prioritizes areas most in need to ensure efficient aid distribution.



Universal Integration

Supports various applications from emergency management to urban planning and public health.

Why IMPACT?



Respond Fast

Quickly notify first responders and organizations about emerging threats.



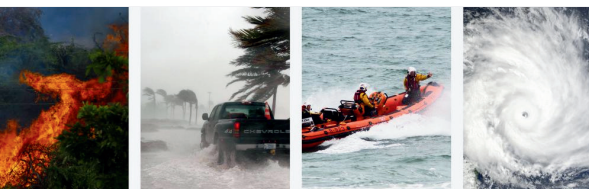
Gain Insights

Prioritize disaster management with in-depth analysis of potential impacts on communities and assets.



Proven Results

Used nationally and locally for disaster impact estimation, response planning, and more.



Join the Future of Disaster Management

Equip your organization with the IMPACT tool and enhance your visibility, coordination, and response capabilities with consolidated and actionable intelligence.



Learn More Today!

Visit us at <https://disaster-impact.com/> to learn more about IMPACT's subscription plans.

